



# **BRAINIACS OLYMPIAD**

## **GEOGRAPHY SAMPLE PAPER**



[info@brainiacsolympiad.com](mailto:info@brainiacsolympiad.com)  
[www.brainiacsolympiad.com](http://www.brainiacsolympiad.com)

**©BRAINIACS OLYMPIAD**  
**ORGANIZED BY MINDCSAPE INTERNATIONAL**

**BRAINIACS OLYMPIAD 2026**  
**GEOGRAPHY SAMPLE PAPER (GRADES 7–8)**

**1. What is the name of the line dividing the Earth into the Northern and Southern Hemispheres?**

A Meridian   B Equator   C Greenwich   D Tropic of Cancer

**2. What does the map scale show?**

A Temperature   B Time   C Distance on the ground   D Number of people

**3. Which planet is the third from the Sun?**

A Venus   B Earth   C Mars   D Mercury

**4. What is blue on physical maps?**

A Forests   B Mountains   C Water Bodies   D Settlements

**5. What is the name of the device for determining the cardinal directions?**

A Hygrometer   B Compass   C Barometer   D Telescope

**6. What is a mountain?**

A An area of land below sea level  
B An area of land covered by water  
C An uplift in the earth's surface  
D A forested area

**7. In which ocean is the Mariana Trench located?**

A Atlantic   B Indian   C Arctic   D Pacific

**8. Which continent is entirely located in the Southern Hemisphere?**

A Africa   B Australia   C South America   D Asia

**BRAINIACS OLYMPIAD 2026**  
**GEOGRAPHY SAMPLE PAPER (GRADES 7–8)**

**9. What is the source of energy for the Earth?**

A Wind   B Moon   C Sun   D Electricity

**10. What is the name of the Earth's natural satellite?**

A Moon   B Phobos   C Titan   D Venus

**11. Which ocean is the smallest in area?**

A Atlantic   B Indian   C Arctic   D Pacific

**12. Which continent has no permanent population?**

A Australia   B South America   C Africa   D Antarctica

**13. What does latitude show?**

A Distance from the equator to an object

B Ocean depth

C Wind direction

D Atmospheric pressure level

**14. Which layer of the atmosphere contains the ozone layer?**

A Troposphere   B Stratosphere   C Mesosphere   D Thermosphere

**15. What is the name of the process by which rocks on the Earth's surface are destroyed?**

A Convection   B Erosion   C Deflation   D Inflation

**16. What is a meridian?**

A A line connecting the poles

B A line parallel to the equator

C The boundary of a continent

D A mountain on a map

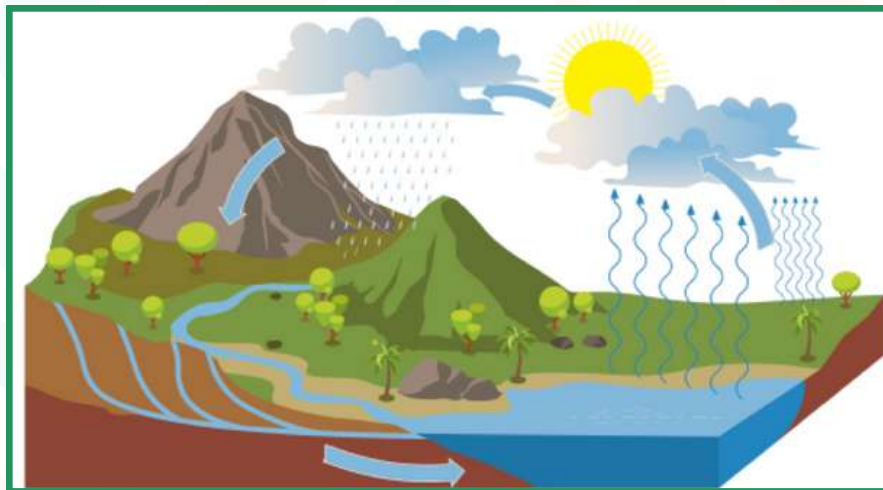
**BRAINIACS OLYMPIAD 2026**  
**GEOGRAPHY SAMPLE PAPER (GRADES 7–8)**

**17. In what direction does the Earth move around the Sun?**

- A From north to south
- B From south to north
- C From east to west
- D From west to east

**18. What physical process is shown in the picture?**

- A Hydrological circulation
- B Atmospheric circulation
- C Movement of lithospheric plates
- D Volcanic eruption



**19. Lines on a map that connect data points of equal value are called...**

- A Isobars
- B Contours
- C Gradients
- D Isolines

**20. The process through which water changes from the liquid to vapor phase is called...**

- A Evaporation
- B Condensation
- C Sublimation
- D Freezing

**21. Which of the climates is typical for equatorial latitudes?**

- A Hot and dry
- B Moderate
- C Cold
- D Hot and humid

**BRAINIACS OLYMPIAD 2026**  
**GEOGRAPHY SAMPLE PAPER (GRADES 7–8)**

**22. What are the names of the huge masses of ice that move across land?**

A Lakes   B Icebergs   C Glaciers   D Volcanoes

**23. Which country occupies an entire continent?**

A Russia   B India   C Australia   D USA

**24. What is the name of the layer of the atmosphere where weather events occur?**

A Stratosphere   B Troposphere   C Mesosphere   D Exosphere

**25. What lines connect points of equal atmospheric pressure?**

A Isotherms   B Isobars   C Isohyets   D Contours

**26. Which ocean washes Europe from the west?**

A Indian   B Atlantic   C Pacific   D Arctic

**27. What does urbanization mean?**

A Migration from the city  
B Rural population growth  
C Growth of cities and urban population  
D Population decline

**28. What pressure is typical for an anticyclone?**

A High   B Low   C Unchangeable   D Variable

**29. What are the boundaries between tectonic plates called?**

A Isobars   B Fronts   C Faults   D Meridians

**30. What is the biosphere?**

A Air shell   B Life area on Earth   C Water shell   D Earth's crust



**BRAINIACS OLYMPIAD 2026**  
**GEOGRAPHY SAMPLE PAPER (GRADES 7–8)**

**31. What influences the change of seasons?**

- A Moon phase
- B Earth's axial tilt
- C Location of mountains
- D Location of oceans

**32. Which of these biomes is characterized by a hot climate with frequent rainfall?**

- A Tundra
- B Taiga
- C Rainforests
- D Steppe

**33. Which of the following factors is related to anthropogenic impact on the environment?**

- A Volcanic activity
- B Mudflow
- C Deforestation
- D Cyclone

**34. Which of these statements is true about Greenwich Mean Time (GMT)?**

- A It varies with the seasons
- B It is used only in the UK
- C It is an international standard for keeping time
- D It depends on the location of administrative boundaries

**35. What motion of the Earth causes day and night?**

- A Orbital rotation
- B Rotation around the Sun
- C Precession
- D Daily rotation around the axis

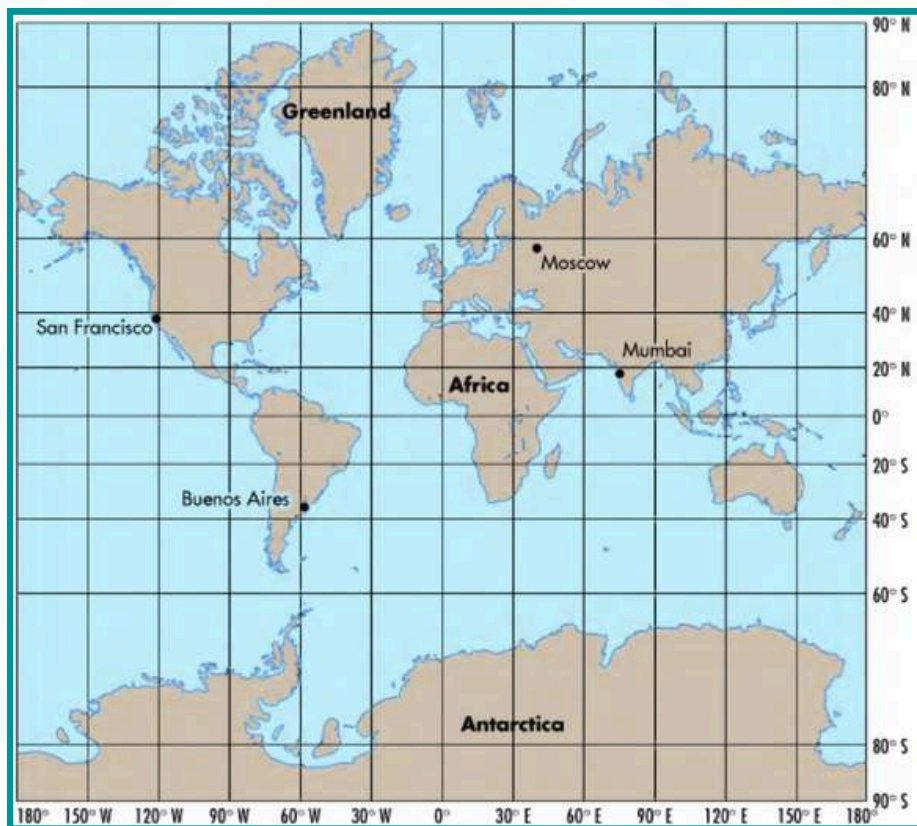
**36. Which pair of cities are located in different hemispheres in latitude and longitude?**

- A Moscow and St. Petersburg
- B Tokyo and Kyoto
- C Lima and Sydney
- D Gaborone and Cape Town

**BRAINIACS OLYMPIAD 2026**  
**GEOGRAPHY SAMPLE PAPER (GRADES 7–8)**

**37. Determine the geographic coordinate of point A.**

A  $60^{\circ}$  S and  $30^{\circ}$  E    B  $60^{\circ}$  S and  $30^{\circ}$  W    C  $30^{\circ}$  S and  $60^{\circ}$  E    D  $30^{\circ}$  S and  $60^{\circ}$  W



**38. Which of the climate zones is located between  $23.5^{\circ}$  and  $66.5^{\circ}$  north and south latitudes?**

A Equatorial    B Temperate    C Arctic    D Tropical

**39. Which of the natural processes leads to the formation of a tsunami?**

A Tornado  
B Glacier  
C Earthquake under the ocean  
D Volcanic eruption on land

**BRAINIACS OLYMPIAD 2026**  
**GEOGRAPHY SAMPLE PAPER (GRADES 7–8)**

**40. Why are the tropics called the "Tropic of Cancer" and the "Tropic of Capricorn"?**

- A Named after the animals of the region
- B According to the zodiac constellations in which the Sun was located in ancient times
- C Due to climatic features
- D Due to the location of mountain ranges

**41. Which device measures air humidity?**

- A Anemometer
- B Hygrometer
- C Barometer
- D Thermometer

**42. What natural object separates Europe and Asia?**

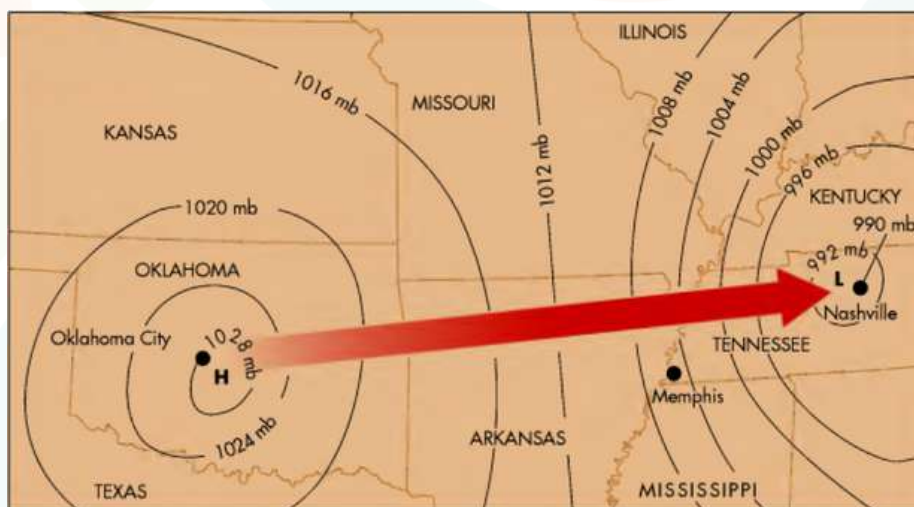
- A Sahara
- B Himalayas
- C Ural Mountains
- D Alps

**43. Which ocean does the International Date Line cross?**

- A Atlantic
- B Indian
- C Pacific
- D Arctic

**44. Using this map, determine which side the air should flow from?**

- A From East to West
- B From West to East
- C From North to South
- D From South to North





**BRAINIACS OLYMPIAD 2026**  
**GEOGRAPHY SAMPLE PAPER (GRADES 7–8)**

**45. Why is the temperature more stable throughout the year at the equator?**

- A Large amount of precipitation
- B High atmospheric pressure
- C Direct sunlight all year round
- D Influence of ocean currents

**46. What happens during the summer solstice in the Northern Hemisphere?**

- A Day and night are equal
- B The shortest day of the year
- C Spring begins
- D The longest day of the year

**47. Which layer of the Earth is made up of molten magma?**

- A Outer crust   B Mantle   C Lithosphere   D Atmosphere

**48. What type of tectonic boundary causes mountains to form?**

- A Divergent boundary
- B Convergent boundary (collision)
- C Transform boundary
- D Deep pressure zone

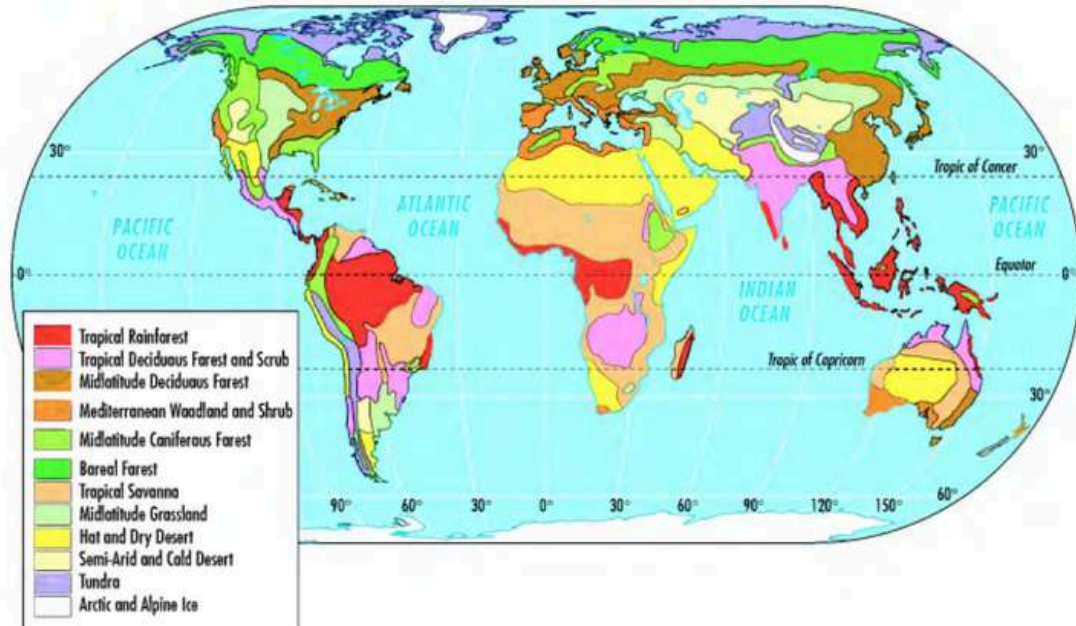
**49. What phenomenon leads to the formation of cyclones?**

- A Increased atmospheric pressure
- B Rise of warm moist air
- C Sinking of cold dry air
- D Lack of winds

**50. Which continent has the most Tropical Rainforests?**

- A Eurasia   B Africa   C South America   D North America

**BRAINIACS OLYMPIAD 2026**  
**GEOGRAPHY SAMPLE PAPER (GRADES 7–8)**



**© 2025 Mindscape International.**

**All rights reserved.**

**This sample paper is for study use only.**

**Copying or selling it is not allowed.**

**This is the end of the Grades 7–8 sample paper.**

**Get ready to explore the World of the Brainiacs!**